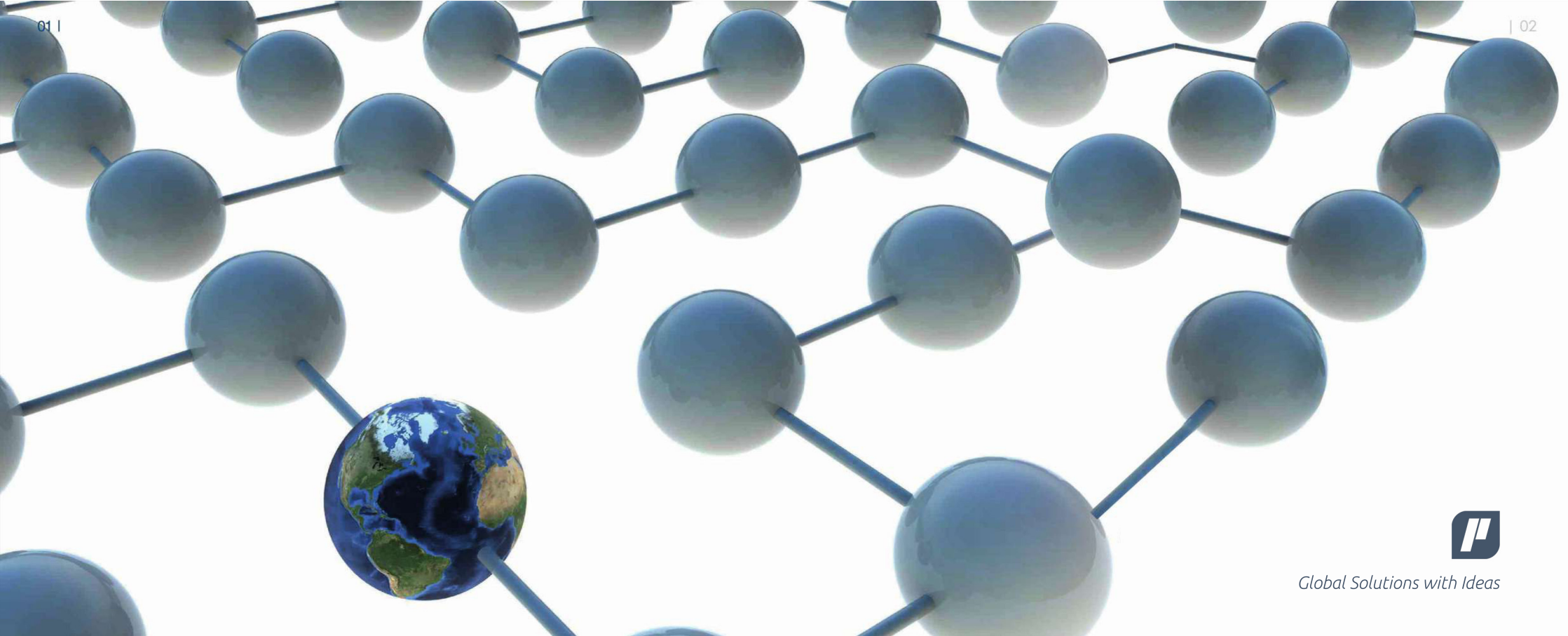




Global Solutions with Ideas





Global Solutions with Ideas



■ Proc-Global

Proc-Global is a leading multi-disciplinary consulting firm, providing expert services, claim management and dispute resolution, project management, economic and investment advisory, and project services.

Since 1995, Proc-Global has operated in Europe, Middle East, and Asia in a variety of industries, including bespoke banking and investment, aviation and airports, power generation, railways, oil and gas, petrochemical, infrastructure, education and science centres, health care, major development and governmental programme, defence, Industrial and environmental, mix-used development, and commercial buildings.

Proc-Global offers business and technical solutions to major projects. Whether we are working for investors, contractors, developers, other engineering and consultancy firms, our goal is to deliver an excellent product in a professional manner.

"We improve commercial process and offer our business and technical solutions to major projects worldwide "



■ Vision

To be a premier international consultant whose clients and partners consider an integral part to their success, to anticipate our client's needs and to deliver on every commitment we make.

Create opportunities and reward success, integrate global and local perspectives, promote sound management of resources, and contribute to a better quality.

■ Values

Ethics: Dedication to uncompromising integrity, honesty, & fairness is at the heart of Proc-Global.

Excellence: We set high standards. We apply advanced technology, continually innovate and improve. We thrive on challenges and accomplishments.

Mutual Respect: We encourage openness, teamwork, and trust. We value an inclusive culture based on diverse backgrounds, experience, and views.

Safety: Maximum health and safety is one of our highest priorities, as lives depend on it.

Sustainability: We plan and act for the future; for the long-term good of our company, our clients, and our world.





A unique approach

Proc-Global recognises that the success of any major project is determined by factors beyond the traditional project management from scope, time, cost, and quality aspects.

Major projects and programmes of works demand an exceptional and flexible management approach

We offer our extensive experience and expertise in mega projects to our clients through the whole project life-cycle; starting from strategic project and portfolio management to project management and close out.





Programme & Project Management Services

- Programme & Project Management
- Commercial Management
- PMO, Project Control and PMIS



Claims Management & Dispute Resolution

- Claim Preparation & Management
- Quantum & Forensic Delay Analysis
- Mediation and Dispute Avoidance.



Expert Services

- Expert Witness
- Expert Determination
- Dispute Expert Advisory



Advisory Services

- Economic and Business Analysis
- Strategic Planning & Management
- Investment & Project Advisory



BIM & Visualisation Services

- BIM Modelling & Coordination
- BIM Oriented Project Management
- VR & Simulation

■ Programme & Project Management

Programme and Project Management Consultancy

Proc-Global has a unique approach in managing programmes of work and projects. Proc-Global's staff considers and manages programmes of work and projects as part of overall business portfolio. Our staff manages the complete life cycle, starting from the strategic phase through to execution handover and to the operation phase. Our services include; Programme Management Project Management, Setting up and running Programme Management Offices, Project Control Services, Integration of project management software tools.

Commercial Management

Proc-Global provides, as a discreet project management service, highly skilled commercial managers to construction and engineering projects throughout the world that are an invaluable asset to our clients. Proc-Global adopt systematic, rigorous processes and robust commercial procedures to ensure that our clients' interests are protected throughout the project life-cycle.

PMO, Project Control and PMIS

Proc-Global has extensive experience in setting up & running Programme Management Office and Project Control departments at various levels, from Project Support Office to Programme Office and Executive/Strategy Programme Office levels. We undertake, for different types of organisations, Client or Contractor, the set-up, or operational improvement of their PMO offices.





■ Claims Management & Dispute Resolution

Claim Preparation And Management

Proc-Global have prepared claims for contractors on major projects, worldwide, in power, utility, process, civil engineering, building and oil and gas sectors. We also acted on behalf of employers, owners, and project managers in evaluating claims submitted by Contractors & claims presented by sub-contractors.

Quantum and Forensic Delay Analysis

Proc-Global performs delay analysis on behalf of Contractors or Employers. A number of forensic delay analysis techniques may be employed, depending on the form of Contract, the availability and quality of the records, the quality of the programme, and the quality of the as built records and general reliability of the evidence. Quantum analysis falls broadly into change / variation, error and omission, change of quantity, prolongation, disruption, loss and expense or damages depends on the form.

Mediation & Dispute Avoidance

Mediation can offer a cost-effective and time-efficient method of reaching a resolution supported by our expert mediators who understand the power of mediation in reaching a satisfactory settlement.



■ Expert Services

Expert Witness

Proc-Global's staff includes experts with vast experience in every industry sector and discipline; they have the technical skills on hand to quickly get to the heart of even the most complex issues. When litigation requires an expert to testify, Proc-Global has a thorough understanding of even the most complex issues and will assign an appropriate expert with the experience and expertise relevant to the client's requirements. All experts are carefully screened for availability and cleared of conflicts before being submitted for consideration by the client.

Expert Determination

Proc-Global can assist by proposing suitable experts to act as the expert determinator from our panel. We will also handle all aspects of the expert determination arrangements. These include arranging document exchange, administering funds, resolving procedural difficulties and providing support and guidance to the parties and the expert determinator as required.





■ Advisory Services

Economic and Business Analysis

Proc-Global applies its economic and business analysis expertise to identify, quantify and evaluate investment alternatives and help its clients to select solutions that meet budget and mission requirements.

Strategic Planning & Management

Proc-Global's strategic planning approach aims to sustain and increase company's value of its clients while taking into consideration the overall growth rate of the market. Within the context of strategic planning, all the internal and external factors affecting company development (competition, trends, technology, regulations, demographic change, company location, distribution or corporate assets, company pricing policy, etc.) are evaluated and vision, targets, main initiatives, and corporate level performance indicators are defined. Proc-Global shall constantly scan the internal and external environment in the particular industry in which the client's firm operates through different approaches such as: PESTEL, SWOT analysis, ... etc.

Investment & Project Advisory

Proc-Global offers an integrated range of investment advisory services prior to, during and following the stages of the investment cycle. Our investment advisory services can be summarized as: Strategic consulting, Due diligence, Market analysis, and Feasibility study.



BIM & Visualisation Services

Our BIM team comprises of a group of design and management professionals having broad insight into design, engineering, project management and technology, with the objective of delivering full-fledged integrated BIM solution. We specialize in project management consultancy and delivering BIM services to revolutionize building design, engineering, and construction management processes, enabling better collaboration and reducing the cost and time.

Our range of BIM & Visualisation services include:

BIM Oriented Project Management:

Integrating BIM with latest PM methods, linking to Project Control to provide 4D capabilities for scheduling, 5D modelling, and quantity take-off & measurements.

BIM Modelling & Coordination:

BIM documentation , Architectural Detailing, 3D modelling and visualizations (Levels 1 and 2). Coordination involves utilising and integrated platform for projects' parties (level 3), with a single shared model for collaboration, assessment (including Clash Detection), and Design and Construction Optimisation.

Visualisation & Simulation:

Virtual Interactive experience using BIM/CAD models and Games Engine Technology; going beyond animations to include Interactive Walkthrough, Simulations, and Decision Support System.

Blockchain technology:

Proc Global collaborates with two UK groups for the development and the use of blockchain technology on projects and their efficient management.





*"Proctal are versatile, competent and flexible.
We have added value and efficiency to the
project execution. Our greatest strength is the
quality of the people we employ."*





■ Bespoke Banking & Investment

From time to time, clients request unique services necessitating analytical exceptional business knowledge. Such services can cover a wide range of projects and industries. Proc-Global has been involved in a number of confidential studies for investments and acquisitions for a number of businesses, these include:

- Investment risk appraisals.
- Financial project modelling.
- Facilities management initiatives.
- Business productivity investigations.
- Headcount and development modelling.
- Information technology implementation.

Such services are discussed and agreed with clients on a confidential basis.

- Shares Acquisition of a Major Construction Firm | UK
- Growth Aqua Programme, Deutsche Bank | UK
- Concession of Port Said Liquid Bulk Terminal | Egypt
- Concession of the Logistic Village and Dry Port | Egypt
- E-Customs, PPP module for Ports and Airports | Egypt
- Deutsche Bank Winchester House Strategic Upgrade | UK



■ Major Developments and Governmental Programmes.

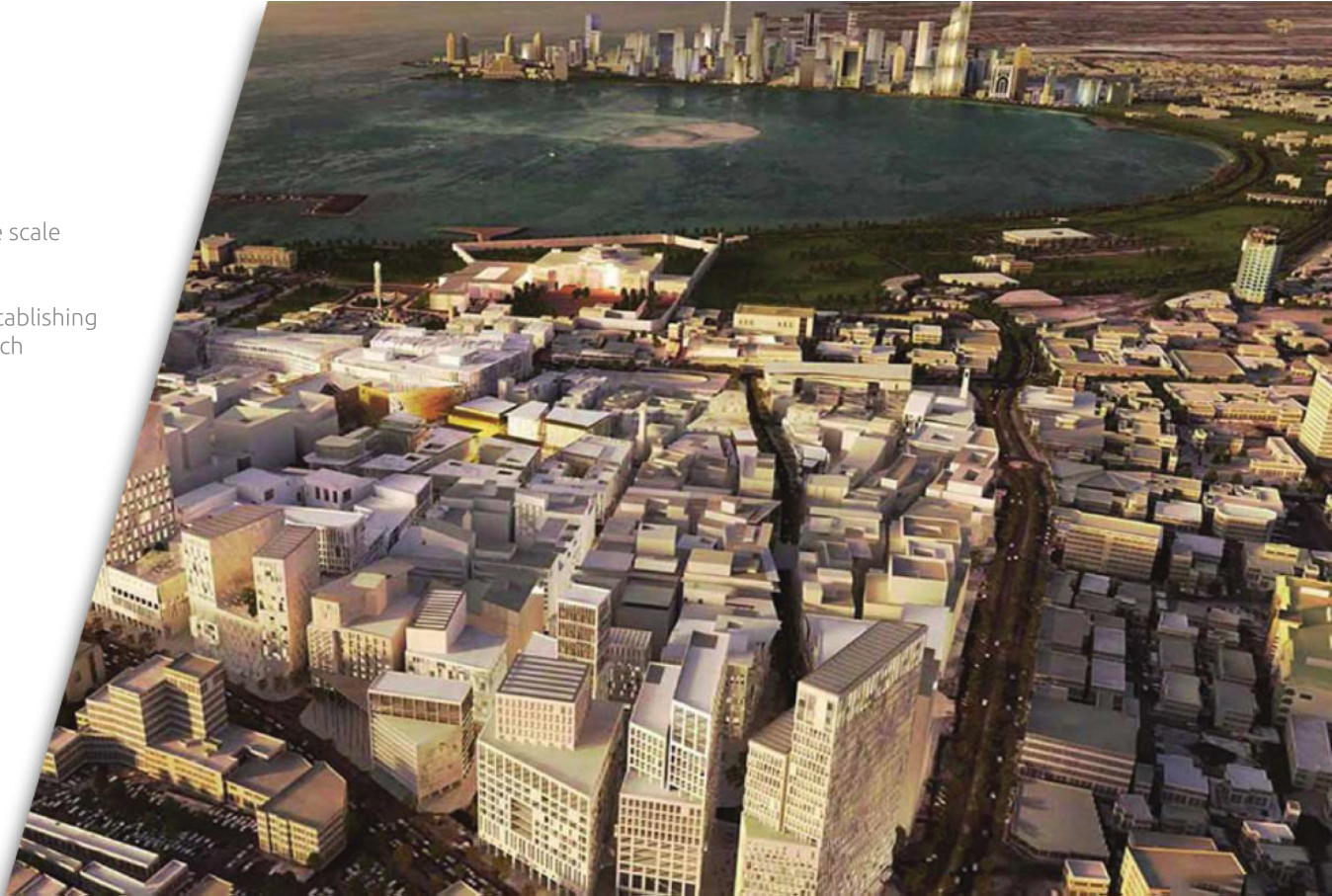
Many investment schemes are a collection of multiple projects forming a whole scale programme of investment, focused on fulfilling the client's business strategy.

Investors and developers need considerable support in respect of financing, establishing and providing programme management of these large-scale projects, all of which require comprehensive expertise to ensure the success of the programme.

Proc-Global has worked alongside major developers, engineering firms, and governmental agencies within Europe, Asia, and the Middle East, covering a wide portfolio of project types.

Example of these programmes are:

- London's Olympic 2012 | UK
- Dongtan Eco City, Shanghai | China
- Great Domodedovo | Russia
- Lagoon Dubai | UAE
- Developing and Regeneration of the Heart of Doha | Qatar





■ Oil & Gas, Petrochemicals, and Fine Chemicals

Process plants and oil storage Facilities demand a strong project execution ability, ensuring delivery in terms of quality, cost and schedule. Such plants are constructed purely as a "machine" to create a product whilst ensuring a profit to the owners and the investors.

Proc-Global has been at the core of developing comprehensive project execution strategies underpinned by effective implementation plans. Proc-Global prides itself on having a strong experience base of such projects.

These projects may be standalone facilities or an integral part of an overall project. Proc-Global commands a high collective experience across a broad range of financial, strategic and implementation scenarios on such projects.

Example of these projects are:

- Soukhna Liquid Bulk Terminal (LPG and Gas Oil Tank Farm) | Egypt
- Kharir Development Project | France & Yemen
- EPIC Project at Ras Lafan | Qatar
- OXY-Chlorination Plant | Egypt
- Idku LNG Project | Egypt
- Port Said Tank Farm | Egypt



■ Power Generation

We take electrical power for granted, but delivering it to a light switch requires massive investment, programme of work, and in many cases huge projects to be undertaken.

Proc-Global's team has been involved in power generation projects and the associated distribution services that require extensive planning and environmental approval.

Proc-Global has supported a range of clients, developers and contractors, in forming programmes of works, and supporting at different stages of these projects life-cycle; from engineering and construction to closeout and disputes.

Example of these projects are:

- FGD Project, Aberthaw Power Station | UK
- FGD Project, Rugeley Power Station | UK
- Abu Qir Thermal Power Plant | Egypt
- Power Plant , Kirkuk Cement Factory | Iraq





■ Aviation & Airports

Today, the aviation industry connects more people, but it increasingly faces complex challenges, such as environmental and sustainability, safety and security, capacity issues and expansion, etc.

However, reducing cost and increasing revenue in both aeronautical and non-aeronautical offerings are shaping a massive pressure on the execution of aviation projects.

Proc-Global has worked alongside either developers or contractors involved in the construction of airports terminals and their facilities around the world.

Example of these projects are:

- Pier 5 Reconfiguration, Gatwick Airport | UK
- Airline Operation Facilities, New Doha International Airport | Qatar
- Landscaping and Street Lighting, New Doha International Airport | Qatar
- Catering Facility - New Doha International Airport | Qatar
- Emiri Terminal and Public Mosque - New Doha International Airport | Qatar



Railway

For congested and polluted cities, meeting growing transit and freight demands with energy-efficiency solutions is a challenge that looms large. Passengers and businesses see rail as a safe, reliable and relatively low-carbon alternative to road and air travel.

In the UK alone, the national rail network is 10,072 miles, carrying 1.7 billion passengers-journeys, and 110 million tonnes of freight annually. Proc-Global has worked alongside contractors involved in the construction of either new and refurbished major lines or electrification of existing lines in the UK and the rest of the world.

Example of these projects are:

- Crossrail Anglia, Crossrail North East Infrastructure & Stations GRIP 5-8 | UK
- Cross Rail West Outer Electrification, Stockley to Maidenhead | UK
- North West Electrification Programme Phase 2 | UK
- Crossrail West Outer Track Infrastructure | UK
- Nottingham Tram Way | UK
- Riyadh Metro | KSA





■ Infrastructure & Telecommunication

With a deep background in civil engineering, Proctal is well equipped to deal with infrastructure challenges.

Every major project includes infrastructure components, which can support or dominate the project. Understanding the technology, the interfaces and the challenges of the project elements is the key to deliver a project on time and within budget.

Proc-Global has worked alongside clients, engineering firms, contractors, developers and governmental agencies involved in programmes of works for different types of infrastructure projects as Maritime Ports, Highways, Water and Waste Water Treatment plant, and Telecommunications.

Examples of these projects are:

- Azzour Water Distribution Complex II | Kuwait
- Quay Wall, East Port-Said Port | Egypt
- Rehabilitation of Timisoara Wastewater Treatment Plant | Romania
- East Kent Sludge and Wastewater Treatment Plant | UK
- Irbid Ring Road | Jordan
- Saudi National Fiber Network I KSA



■ Education & Science Centre

The Education challenges are always evolving the need to adapt to a fast-changing world. Advances in technology and new teaching approaches are transforming the quality and the specification criteria of education and science centres.

Proc-Global has worked alongside educators, developers, architects, and contractors involved in a wide range of consulting activities and covering all aspects of the construction life-cycle, as well as projects' closeout and claims management.

Examples of these projects are:

- The Main Campus of the Egyptian Japanese University of Technology (EJUST) | Egypt
- Liberal Arts and Science College | Virginia Commonwealth University | Qatar
- Weill Cornell Medical College at the Education City | Qatar
- Façade Cladding at the Education City | Qatar
- Four (4) New Schools Package 2, Stage 7B | Qatar
- Four (4) New School Package2, BA12/-12/C/076/G | Qatar





■ Development

Given the multi-faceted nature of construction, integration is the name of the game. Whoever is chosen in the team, will be crucial to its success.

Our consultants work closely with our clients, as we have the proven expertise and ability to provide seamless integration solutions to our clients' construction programmes.

Investors and developers need considerable support in respect of financing, establishing and providing programme management of these large projects, all of which require a comprehensive team spirit to ensure that the project is successful.

Proc-Global has worked alongside engineering firms, contractors, major investors within Europe, and the Middle East covering a wide portfolio of project types.

Example of these projects are:

- London Aquatic Centre, London Olympics 2012 | UK
- New Wembley National Stadium, London | UK
- New Street Square, Central London | UK
- Cardinal Place, Esso Glen project, Victoria, London | UK
- Atlantis Hotel Staff and Management Accommodation | UAE
- Queens Park, Crewe Main & Bowls Pavilion | UK



Commercial Buildings

A commercial development is similar to any major development that highly requires integration and coordination between different inputs.

Our consultants work closely with clients as we have the proven expertise and ability to provide seamless integrated solutions for the construction of similar projects.

Proc-Global has worked alongside developers and contractors involved in a wide range of consulting activities covering all aspects of the EPC life-cycle as well as project closeout and claims management.

Example of these projects are:

- High Cross Shopping Centre | UK
- Dubai Festival City Shopping Mall | UAE
- Sama Stores at Al Madina Al Monawara | Jordan
- Sama Stores at Tabarbour | Jordan
- CIB Bank Green Plaza | Egypt
- CIB Bank Abbas Akkad | Egypt





■ Defence

Defence organizations depend on being ready for anything. Having advised on different major defence projects and used to work within tight deadlines, our team is organized and has the knowledge required to instantly, efficiently and in accordance with this sector-specific procedural and security requirements respond to our clients' needs.

Proc-Global worked alongside governmental agencies and contractors involved in a wide range of consulting activities covering all aspects of the EPC life-cycle as well as project closeout and claims management.

Examples of these projects are:

- Blatchford-Preston Complex Phase 2, Al Udeid US Air Base | Qatar
- Defence Training Review (DTR) Matrix Capital Programme | UK
- Main Operating Air Base Upgrade, Phase III, Ganaclis | Egypt



■ Healthcare

In an increasingly competitive healthcare industry, continuous facility improvements are critical to patient satisfaction, attracting and retaining top medical talent, and complying with evolving industry and environmental standards.

Healthcare construction projects face the usual challenges of construction, in addition to healthcare-related factors. One of these factors is uninterrupted patient care, which may require creative construction solutions to execute successfully.

Proc-Global has worked alongside healthcare providers, funders, and contractors involved in a wide range of consulting activities, covering all aspects of the EPC life-cycle as well as project closeout and claims management.

Example of these projects are:

- Mesaieed Hospital and Integrated Health Centre | Qatar
- Torbay Hospital | UK
- Canal Point Hospital | UAE
- Health centre at Al Waab | Qatar
- Health centre at Qatar University | Qatar





■ Industrial & Environmental

Love them or hate them, heavy industries are essential to the provision of a vast range of commodities necessary for our daily life. We all need regular use of household items derived from large scale industrial plants.

Today, we live in a culture that has been significantly shaped by the forces of industry. However, the environmental cost of this kind of culture is not always immediately visible. To produce any single good, there is a long chain of processes that should also be accounted for when considering the environmental cost of anything.

Proc-Global has worked in partnership with manufacturers, funders, and governmental agencies involved in the manufacture and environmental improvement of industrial projects.

Example of these projects are:

- Beni Suef Cement Factory | Egypt
- Beni Suef, Beba and El-Fashn Solid Waste Sanitary Landfill | Egypt
- Bridging Project for Cleaner Production Technologies for the Leather Industry | Egypt
- EP3 Project for Nile Pharmacy Company | Egypt
- EP3 Project for Edfina Food Company | Egypt
- EP3 Project for Damitta Fish Factory | Egypt
- EP3 Project for Moharam Press Company | Egypt
- EP3 Project for French/Egyptian Vestia | Egypt





EGYPT

4, El-Akad Buildings,
El-Saida Khadiga St.,
El-Sefarat District, Nasr City, Cairo.

OFC: +20 3 4294151
FAX: +20 3 4294151

OMAN

Al Ghubarh House,
Office Block 43,
PO Box 778, P.C 116 MMF,
Muscat, Oman

UK

68 Lombard Street,
Office 712,
EC3V 9L J, London, UK

OFC: +44 20 7868 1617
FAX: +44 20 7868 1618

QATAR

Level 22, Tornado Tower,
West Bay, P.O. Box 27774,
Doha, Qatar

OFC: +974 4429 2490
FAX: +974 4436 6673

JORDAN

3/F Office No. 13 & 14
Building 58, Prince Shaker
Bin Zaid Road, Shmeisani,
P.O. Box 851475,
Amman 11185

